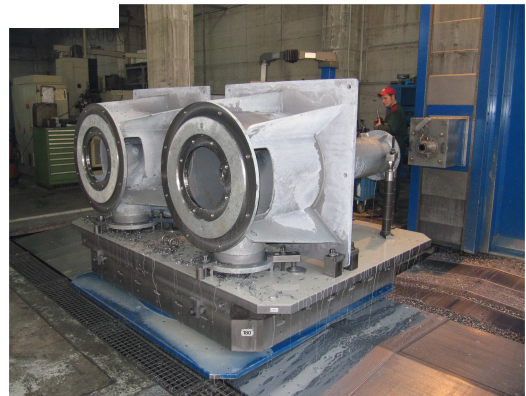
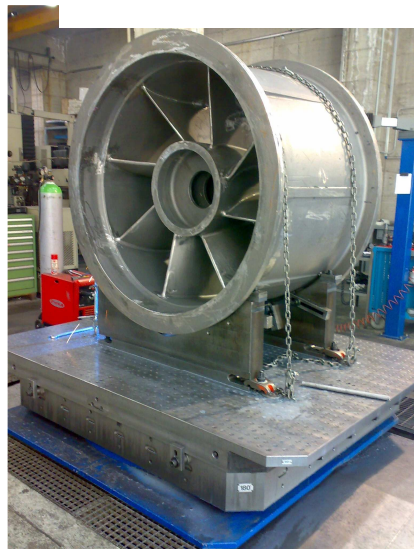




MISA
SERVICE



Italian Technology and Experience at your disposal

As any other machine, pumps need periodical maintenance that can be either routine, extraordinary or scheduled.

Thanks to our long experience, we are able to offer technical advice and assistance to the customer with high levels of safety, quality and competence.

Misa is in a position to undertake to make any inspection according to an agreed check-list, in order to spare troubles and obligations to the customer.

An ever-increasing number of customers is entrusting us with service contracts for routine, extraordinary and scheduled maintenance.

Periodical inspections and controls prevent possible failures; besides they economize energy and limit the possibility of a plant-stop.

These are performed following the safety standards, in conformity with the certified Quality System.



Mixed-flow pump interchangeable with the existing sited in a Petrochemical plant.



From the top:

- New mixed-flow pump for cooling systems
- Reconstruction of a propeller pump with variable pitch blades for a reclamation plant
- Complete overhaul of turbine pumps for potable water distribution

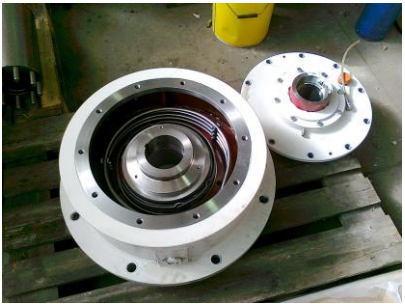
For minor overhaul and restoration of pumps, our services are:

- routine and extraordinary maintenance;
- contracts for scheduled services;
- construction by sample;
- restoration of the hydraulic efficiency;
- installation on customer site;
- pump performance test with related measurement, possible also on customer site;
- assistance on request on customer site and/or customer workshop;
- updating of safety at the workplace according to the standards in force;
- solution of any problem on any kind of pump assuring our prompt action in a short time;
- overhaul of electric motors either by appropriate overhauling or complete rewinding;
- warranty on the performed work;
- functional testing in our test room with certified instruments;
- Quality Certificate in compliance with norm UNI EN ISO 9001:2015 - 14001:2015 - 45001:2018.



In sequence:

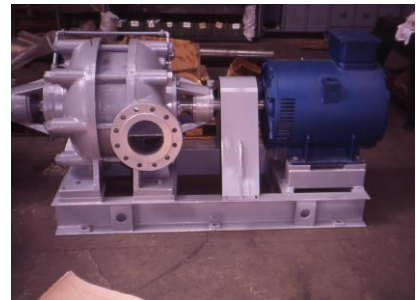
- Open mixed-flow impeller
- Sewage pump with double-channel impeller
- propeller pump
- closed mixed-flow impeller
- hydraulic components of a propeller pump
- propeller pump impeller on shaft
- radial flow impeller
- hydraulic components of a centrifugal pump



In sequence:

- Device for blade-pitch changing in a Kaplan system
- axial flow pumps for fish farming
- two stage propeller pump with blade pitch adjusting on working
- cooled rolling bearing to support axial thrust
- various horizontal propeller pumps
- vertical propeller pump for a cooling system

COMPLETE RESTORE FOR SMALL AND LARGE LIFTING PLANTS



Maintenance of plants and related existing pumps.
 First row = overhaul of various propeller pumps.
 Second row = electro-pumps reconstruction according to the original design.

High-standing restoring of a centrifugal pump, double entry type, dated 1958. This pump is working in a water distribution plant of EYDAP in Greece.
After the overhaul, the pump was tested with the witness of the customer officials.



Pump type: AV 500/800, year 1958
Q = 1100 l/sec H = 85 m P = 1700 HP n = 980 g/min



- Many hydraulic parts with a customized design in order to optimize the existing plants and save energy.
- Rotating parts of a propeller pump with a capacity of 10.000 l/s
 - NC machining of the a propeller pump blade for land reclamation
 - Open mixed-flow impeller
 - Impeller of an end-suction centrifugal pump for high head
 - Centrifugal impellers with double channel to handle water with solids parts for the application in a steelwork
 - Machining of a double entry impeller



Various repairing and addition of new electric motor on old pumps.



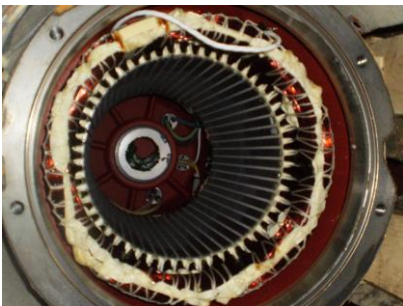
In sequence:

- Vacuum pump with water ring during revision
- Multistage centrifugal pump during the assembly after the overhaul
- Revised propeller pump ready for the installation in test room
- Centrifugal pump on base-plate to be disassembled for the revision of active parts
- Disassembly and maintenance on site



In sequence:

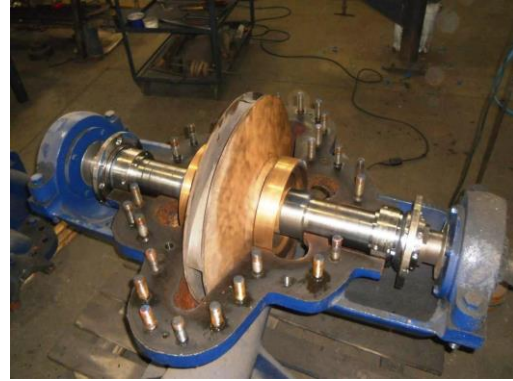
- multistage centrifugal pump
- regulator for centrifugal pump
- axial pump with angle head
- centrifugal impeller with channel with wide passage for solids parts
- axial pumps with adjustable blades
- body for regulator Kaplan



Maintenance on customer site of submersible pumps.



Reverse engineering.



Reverse engineering.



Repair of electric-pump Pellizzari type FIER 10.000 - Crevenzosa pumping plant



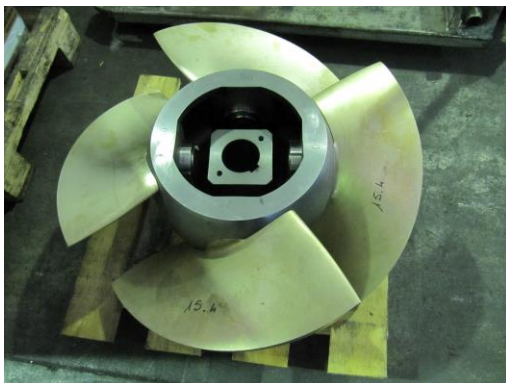
Pump RIVA 4500 l/sec H= 8 mt



N. 1 electric-pump RIVA of 5500 l/sec H=5,5 rpm 368
Cartoccio pumping plant



Cartoccio pumping plant
 - impeller
 - bearings in white metal
 - shaft protective bearings



Study and test of new hydraulic.



Pellizzari GV 5000/8 - 2500 CV - 735 rpm -
6600 V - 50 Hz
Yliki - Mourikion plant - EYDAP Greece



Pellizzari GAVS 1250/28 - 135 CV -
210 rpm - 28 poles
Cavanella Po plant, Consorzio
Bonifica Adige Po



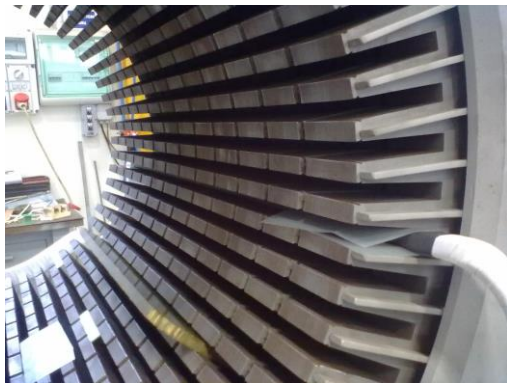
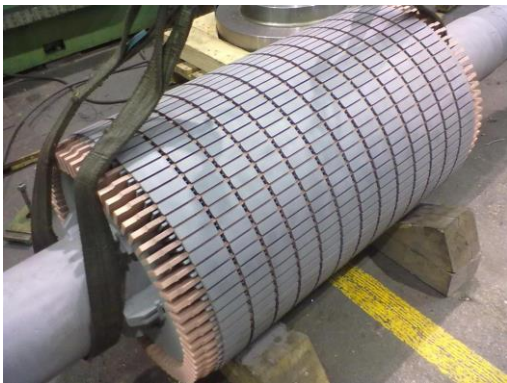
Pellizzari GAVF 1000/16 - 195 CV -
365 rpm - 16 poles
Zuccarello plant, Consorzio di
Bonifica Acque Risorgive



Overhaul of some electrical motors: with winded or short-circuited rotors.



Electric motor TIBB QRN800K4 Camastra plant



3000 kW - 1450 rpm - 6000 Volt - 50 Hz Camastra pumping plant for aqueduct



← Motor Pellizzari GAS 5000/22 n=267 rpm
CV=1100 V=550

↓ C.G.E. 500 CV - 368 rpm - 3000 Volt - 50 Hz
Cartoccio pumping plant for reclamation



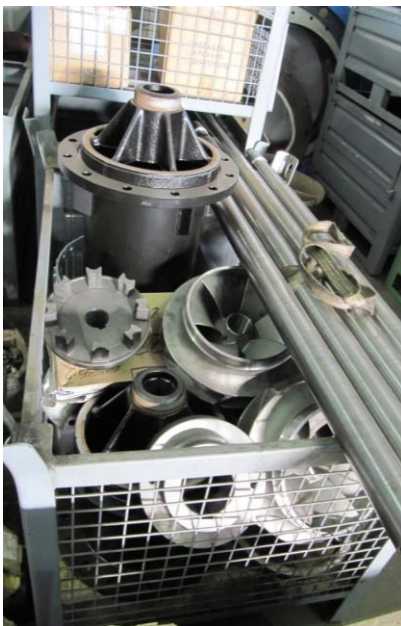
We are pleased to inform you that a few years ago Misa set up a new SPARE PARTS KIT to be suggested to our customers.

On the basis of our long considerable experience and consolidated know-how in this field both in the public and private sectors, we guarantee that correct, prompt and effective maintenance is able to ensure and prolong the life of your pumps.

This new service includes a stock of frequently wearing spare parts to be kept at your disposal in our warehouse. In case of repair they can be supplied to you easily and quickly, thus reducing the times of your machine-stop.



Availability of many spare parts in our warehouse to ensure an efficient service



Availability of many spare parts in our warehouse to ensure an efficient service



MISA S.r.l.
Via Decima Strada 11/13 - 36071 Arzignano (VI) - Italy
Tel. +39 0444 451544 • Fax +39 0444 451542 • www.misaitalia.it • info@misaitalia.it